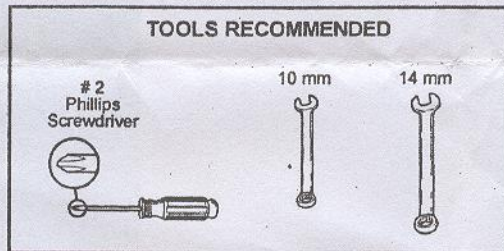
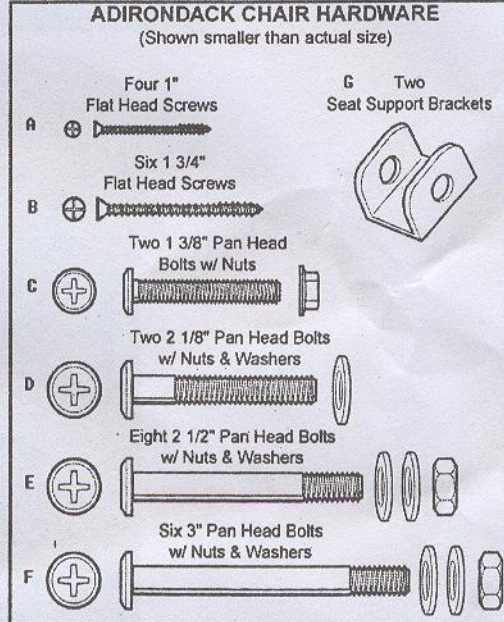
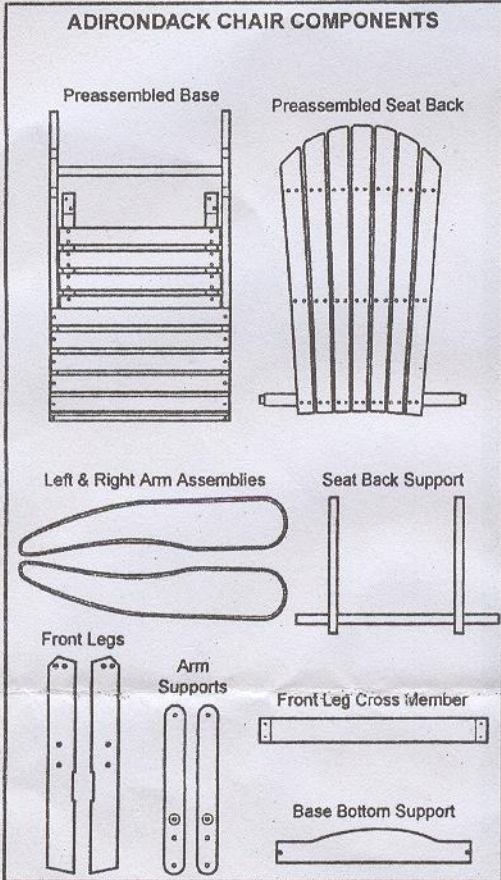




# ASSEMBLY



**NOTE:** ? Read all instructions before starting.  
? Do not completely tighten any bolts until the unit is fully assembled and sitting on a level surface.

**STEP 1** Lay assembled seat base on flat surface. Using 2 1-3/4" screws, attach the base bottom support to the seat base.

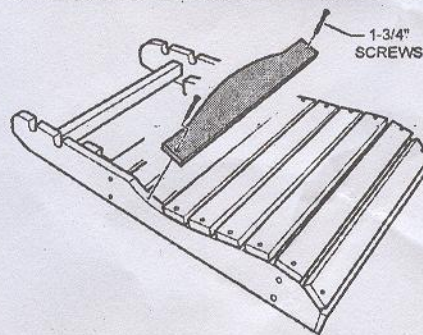


figure 1

**STEP 2** Tip the seat base up on it's side and pull out the self storing ottoman (if equipped) until it stops. Using the 2-1/2" bolts, washers and nuts, attach both front legs to the seat base. Be sure to install the washers as shown.

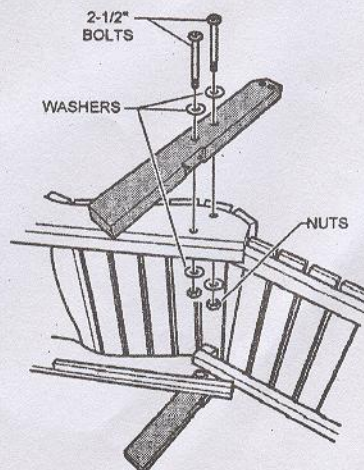


figure 2